



DISTRICT ONE

Coworking

Coworking Space Schöneberg

Hauptstrasse 151, 10827 Berlin

We offer a large number of open space rooms and at the same time many private offices where our members can retreat and work in peace. This is the reason why we define ourselves as a hybrid space.

The Space has 2,000 sqm on 5 floors with over 350 workstations.

DISTRICT ONE

Coworking



What we offer

You get access to a great-designed coworking space with all amenities to make your work-space as comfortable and productive as you need it to be.

- fully air-conditioned rooms
- fast Internet (1 Gbps upload/download)
- High-performance ventilation system
- App for digital flexible access
- Hot desk & lounges areas
- large community kitchens
- reception service
- lockable safe deposit boxes
- high quality furnished offices
- water, tea, coffee, fresh fruits & snacks
- cleaning service
- high hygiene standards
- photo booth & meeting pods





Virtual Office

Are you looking for a professional business address?
With our virtual office you get everything you need.

- **real business address**
- for e.g. commercial register & tax office
- company name on the mailbox
- digital forwarding of letter via Mail
- on request: mail forwarding 1x per month
- monthly cancelable

from 99 EUR

per Month / + 19% Vat



10 Days Desk

With this membership you can come to our space 10 days the month, whenever you need a workspace.

- **access Monday- Saturday (7am - 10 pm)**
- 10 days per month
- photo booth & meeting pods
- monthly cancelable

from 190 EUR

per Month / + 19% Vat



Flex Desk

Find your favorite place in the Open Space and use our flexible workplace solutions.

- **always a saved place in the Open Space**
- access Monday- Saturday (7am - 10 pm)
- usable as business address
- printer contingent
- photo booth & meeting pods
- monthly cancelable

from 290 EUR

per Month / + 19% Vat



Private & Team Office

on request

The team offices are furnished and lockable and have capacities of 2 - 10 persons per office.

- access Monday- Saturday (7am - 10 pm)
- mail reception
- usable as business address
- printer and IT support
- photo booth & meeting pods
- meeting room contingent
- company logo on the wall
- flexible duration, min. 3 months



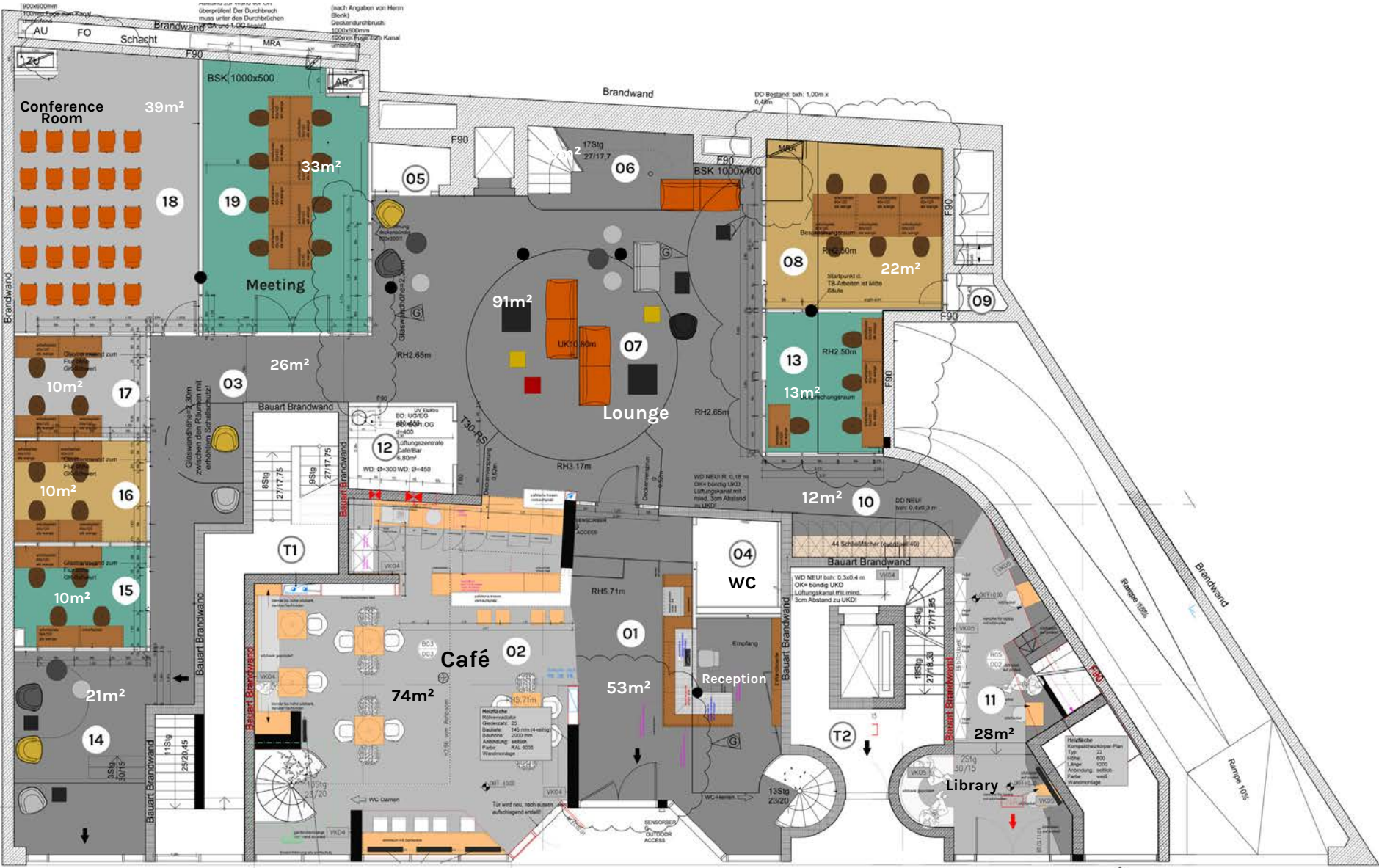
Meeting Room

from 29 EUR / Hour

Our meeting & conference rooms are equipped for your needs and are available in different sizes for different occasions.

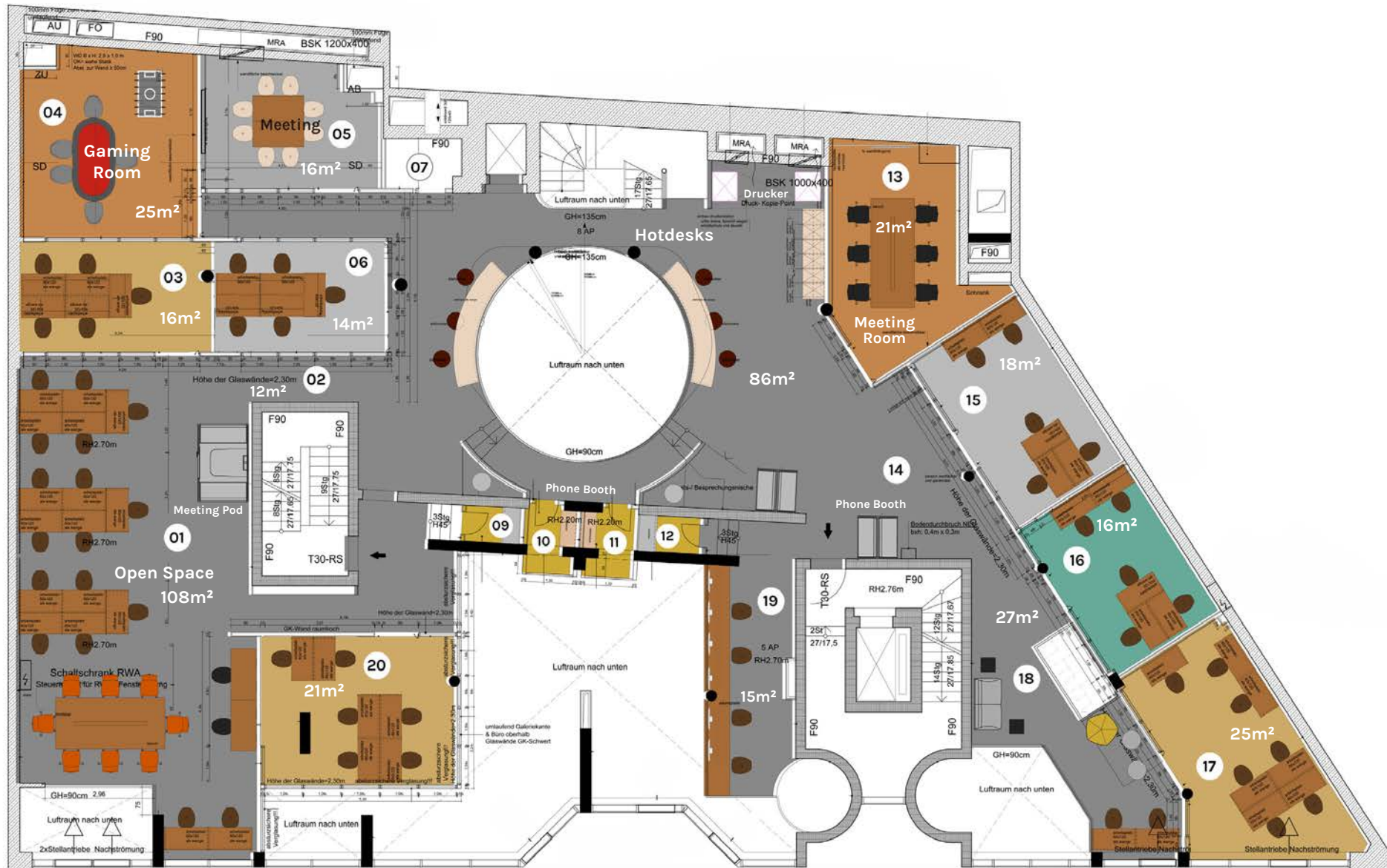
- capacities from 2 - 50 persons
- 4K TV screens with HDMI, LAN
- wireless Airplay
- flipchart, whiteboard & marker
- air-conditioned rooms
- fiber optic internet, 1000 Mbit/s symmetrical
- coffee, tea, water, fruit & snacks

Ground floor

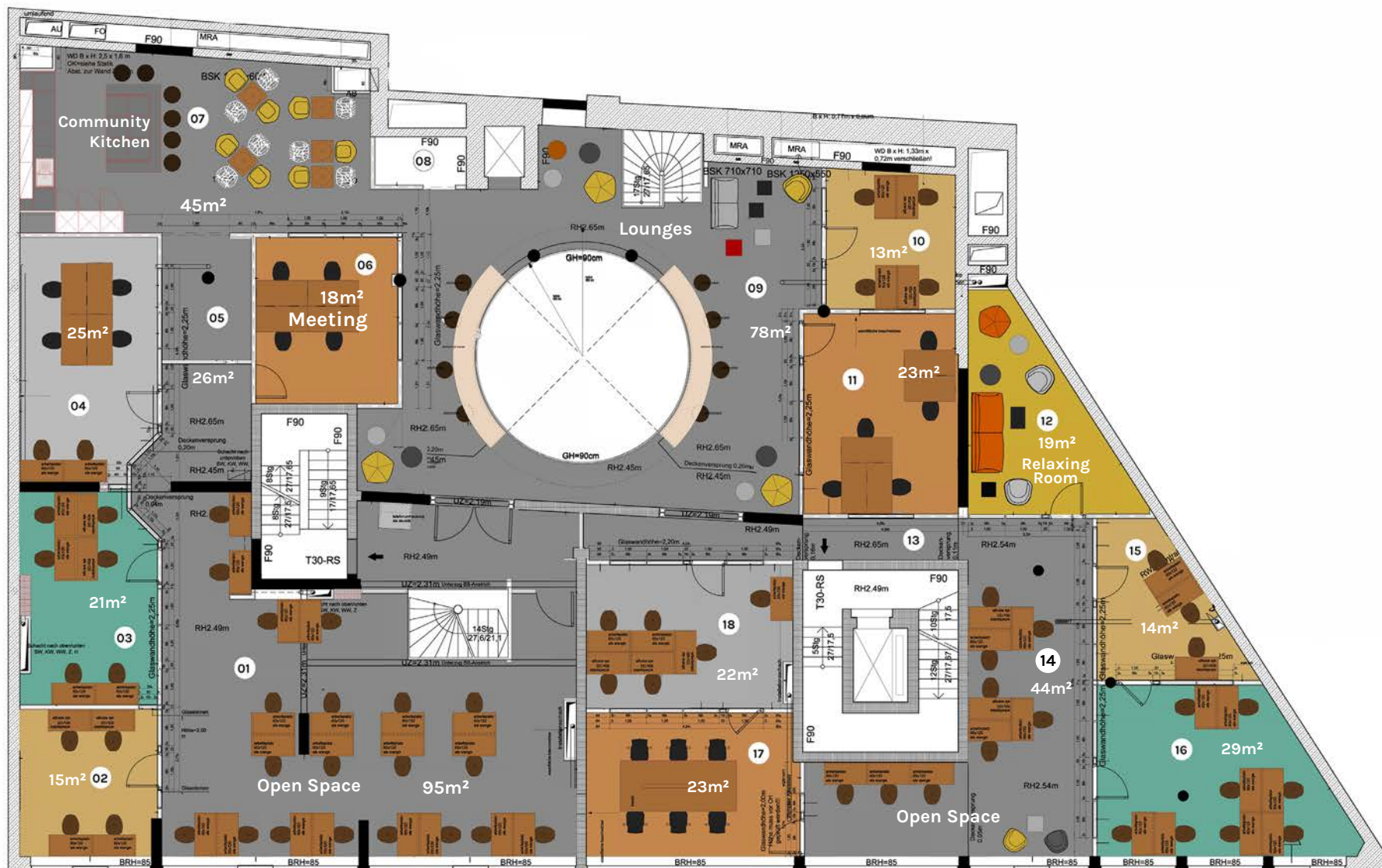


© CPM Architekten
© Deutsche Werstätten

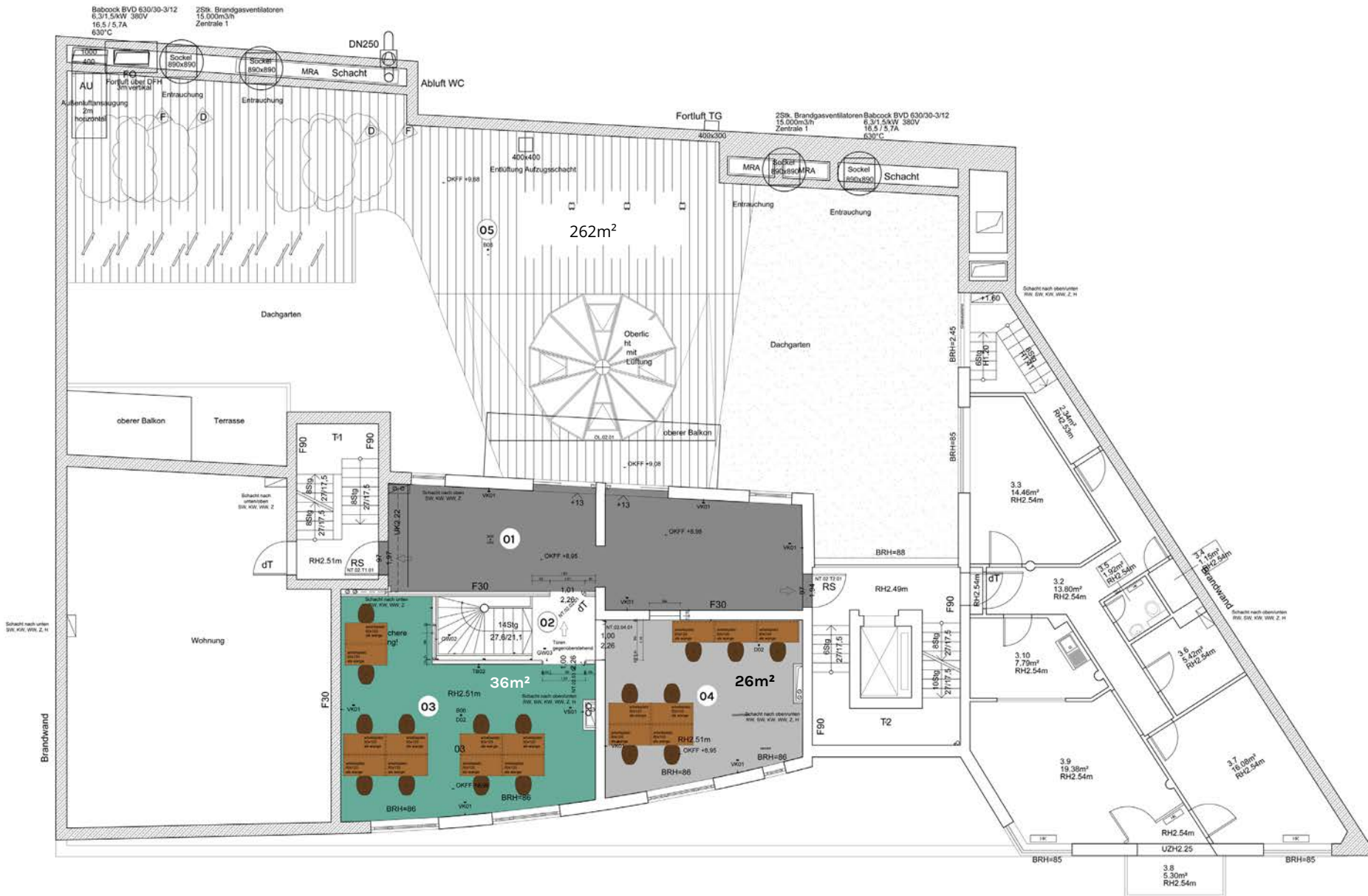
Gallery floor



1st floor



2nd floor



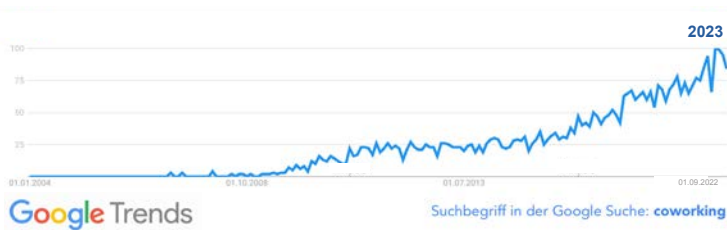
Increasing demand for flexible offices

Many companies have recognized that flexible working structures will become a long-term trend in Germany. This new office concept is also called flexible office or desk sharing.

The changed needs of the employees have modified the space requirements and flexible concepts are now in demand.

FLEXIBLE OFFICES & COWERING SPACES AS A LONG-TERM TREND

Coworking spaces provide office and workspace to companies, self-employed person, start-ups and all those who need a flexible and comparatively inexpensive alternative to long-term leases.



Neighborhood

District One is located in the Schöneberg neighborhood near Akazienstraße and the Kleistpark subway station. The space is centrally located within walking distance and offers fancy cafes, restaurants, organic markets in its area.

POINTS OF INTEREST

ARTS & CULTURE

- 01. Haus am Kleistpark
- 02. Q Gallery
- 03. Urban Nation
- 04. Eden Eden
- 05. Philharmonie
- 06. Neue Nationalgalerie

DINING

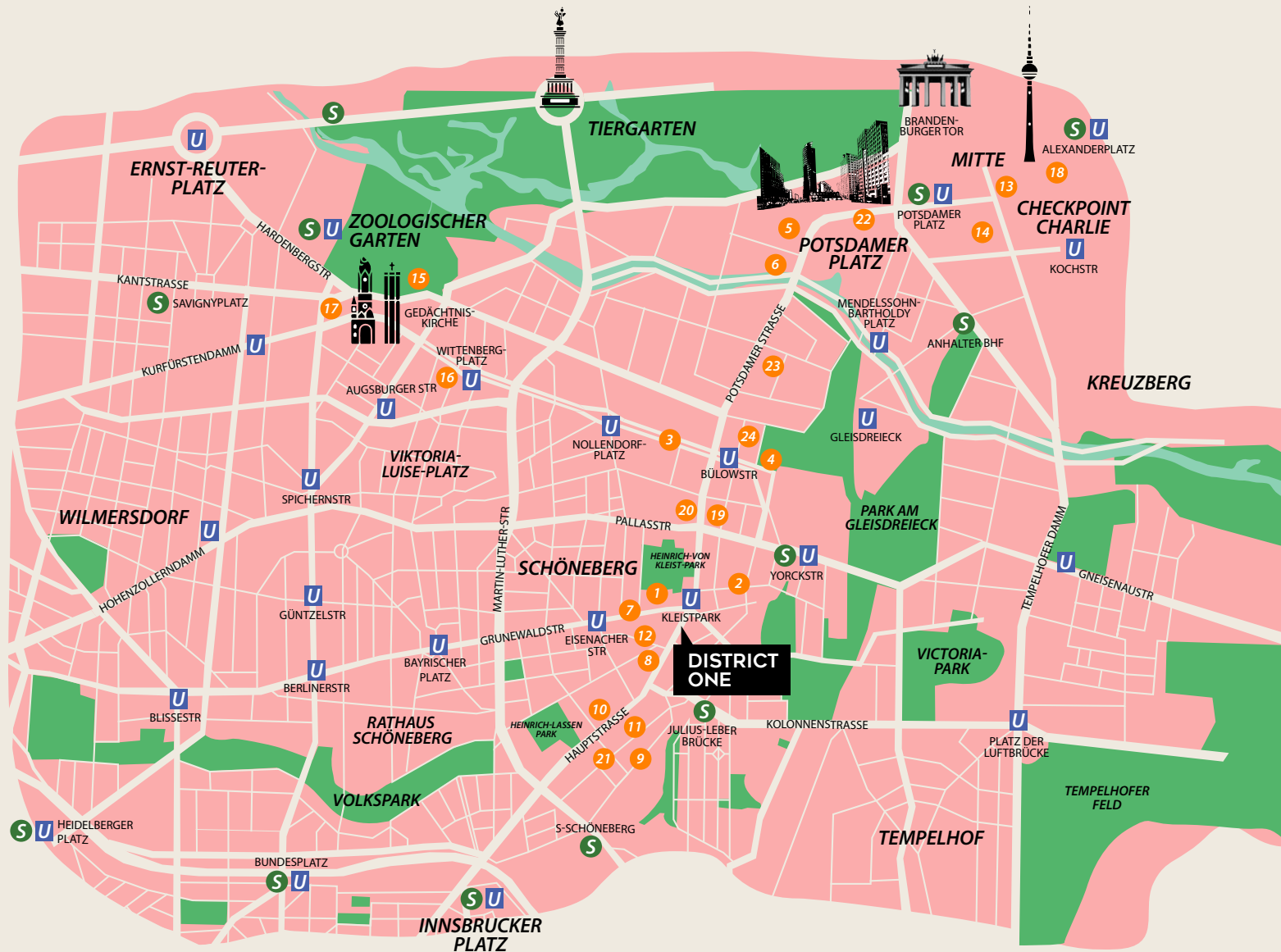
- 07. Lagalante
- 08. Zapata
- 09. Ksara
- 10. Zam Zam
- 11. Garda Pizza
- 12. Varadero

LIFESTYLE / RETAIL

- 13. Mall of Berlin
- 14. Arkaden
- 15. Bikini Berlin
- 16. KaDeWe
- 17. Europa Center
- 18. Alexa

HOSPITALITY

- 19. Lindemann`s
- 20. Design Hostel P182
- 21. Hotel Schöneberg
- 22. The Mandala
- 23. Lulu Guldsmeden
- 24. Novum City Hotel



| | |
|----------------------|---------|
| ✈ Airport Schönefeld | 🚗 20min |
| ✈ Airport BER | 🚗 24min |
| ✈ Airport Tegel | 🚗 15min |

| | | | | |
|-----------------------|-------|-----------------------|--------------|-------|
| S Potsdamer Platz | ————— | S Julius-Leber-Brücke | 7min | |
| S Rathaus Steglitz | ————— | S Julius-Leber-Brücke | 8min | |
| S Friedrichstr. | ————— | S Julius-Leber-Brücke | 10min | |
| U Zoologischer Garten | ————— | U Berliner Str. | U Kleistpark | 13min |
| U Alexanderplatz | ————— | U Hermannplatz | U Kleistpark | 25min |
| 🚌 Hauptbahnhof | M85 | ————— | 🚌 Kleistpark | 20min |

DISTRICT ONE

Coworking

District One GmbH
Hauptstr. 151, 10827 Berlin

Phone. +49 30 940 42 407

info@districtone.berlin
www.districtone.berlin

Die angegebenen Preise verstehen sich zuzüglich 19% Mehrwertsteuer.